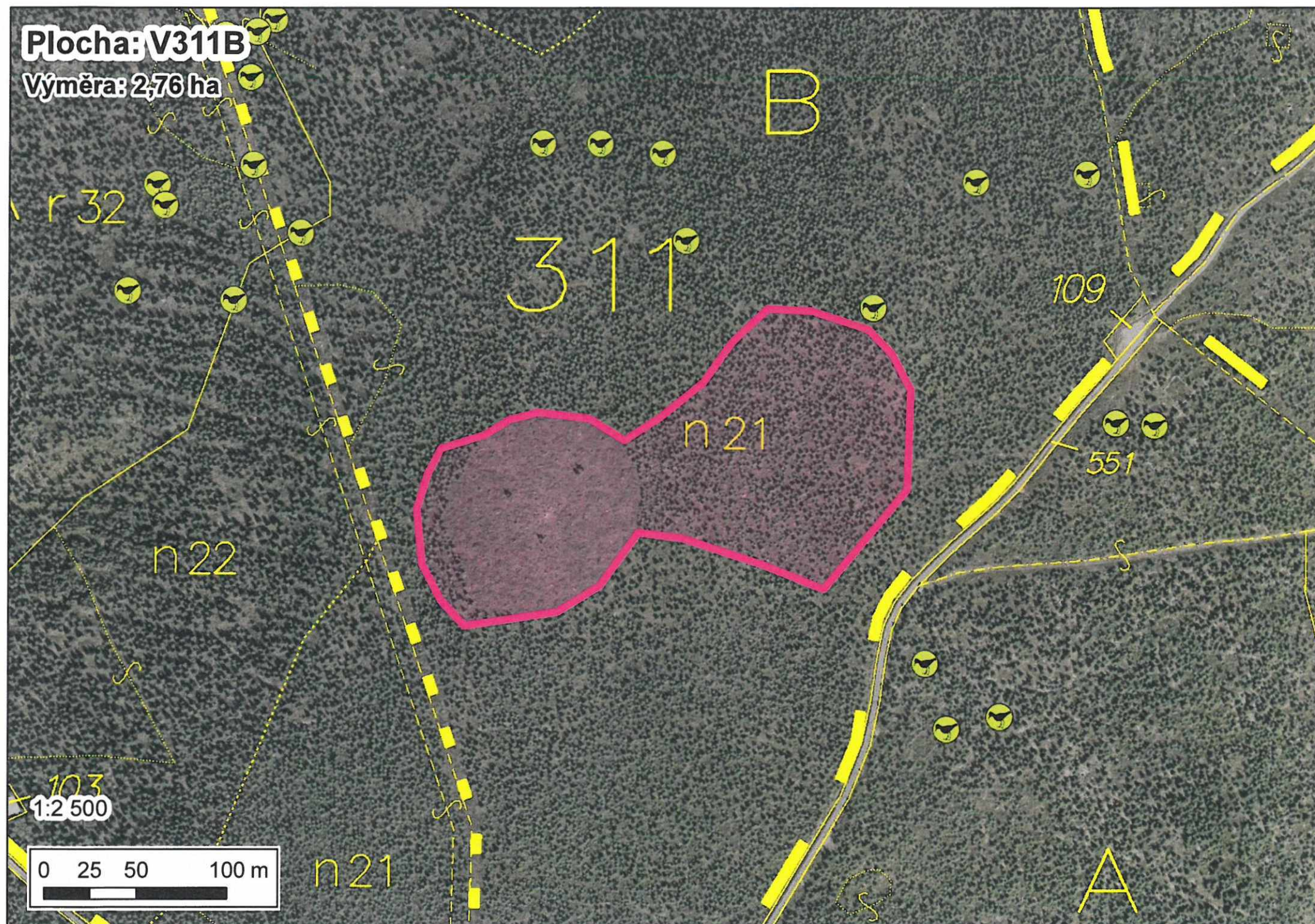


Plocha: V311B

Výměra: 2,76 ha



Plocha: V408C

Výměra: 3,33 ha

408

551

34

r 31

r 31

r 37

D

105

n

22

C

r 34

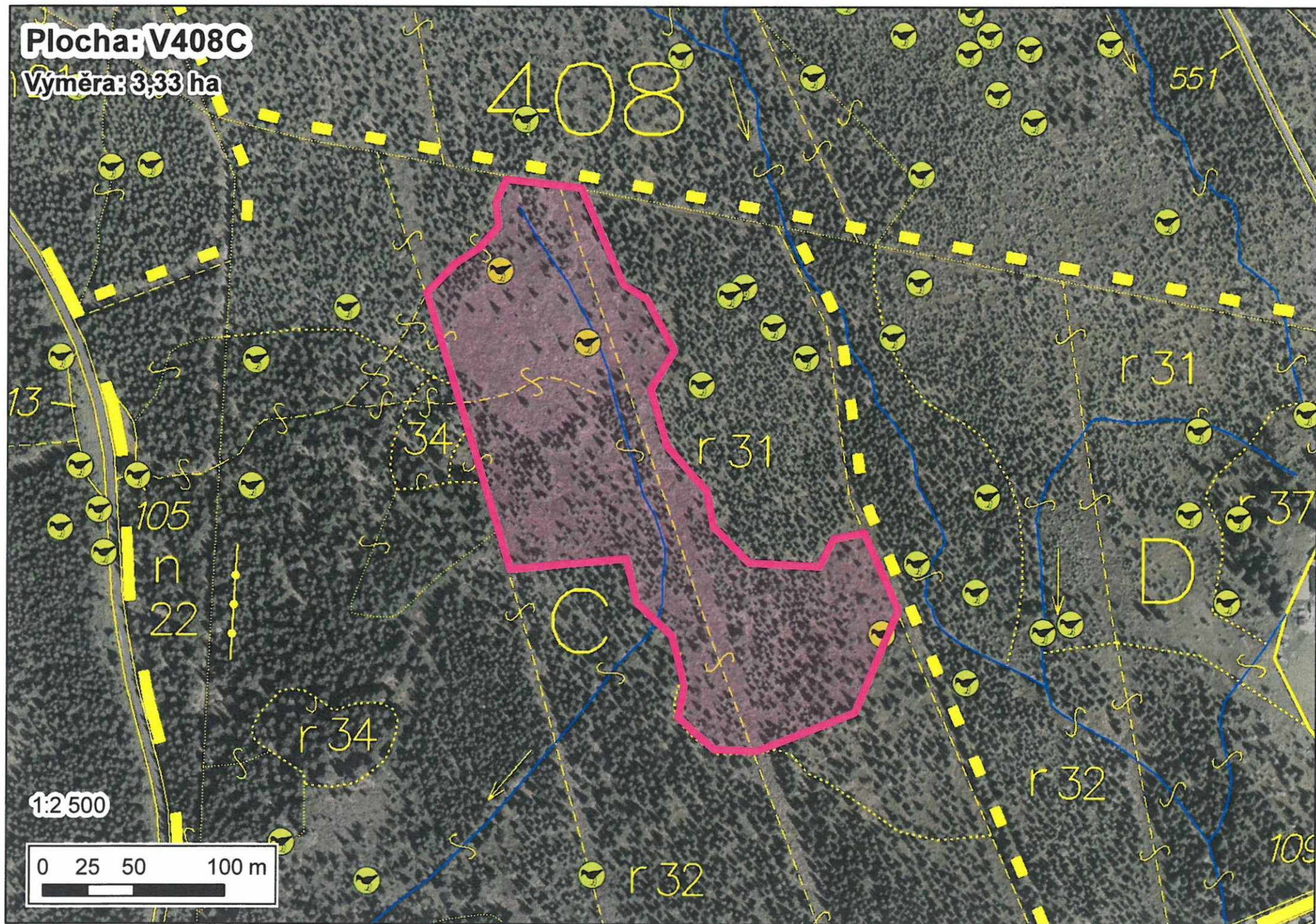
r 32

109

r 32

1:2500

0 25 50 100 m



Plocha: V404B

Výměra: 1,62 ha

902

d 28 A

d 31

28

21

B n 21

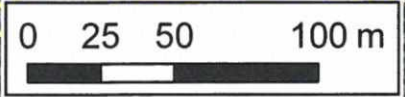
404

OVKY

1:2 500

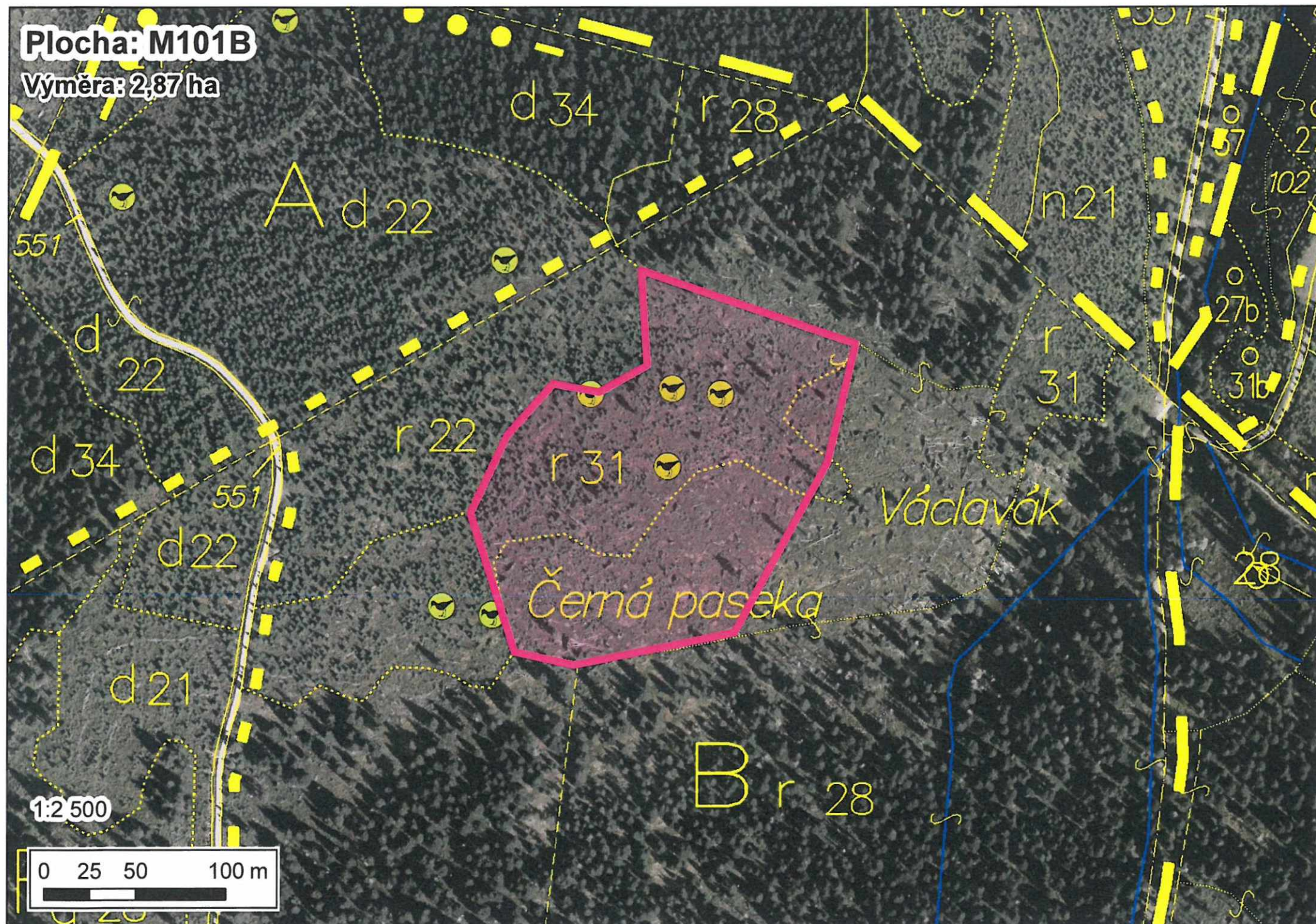
n 28

n 31



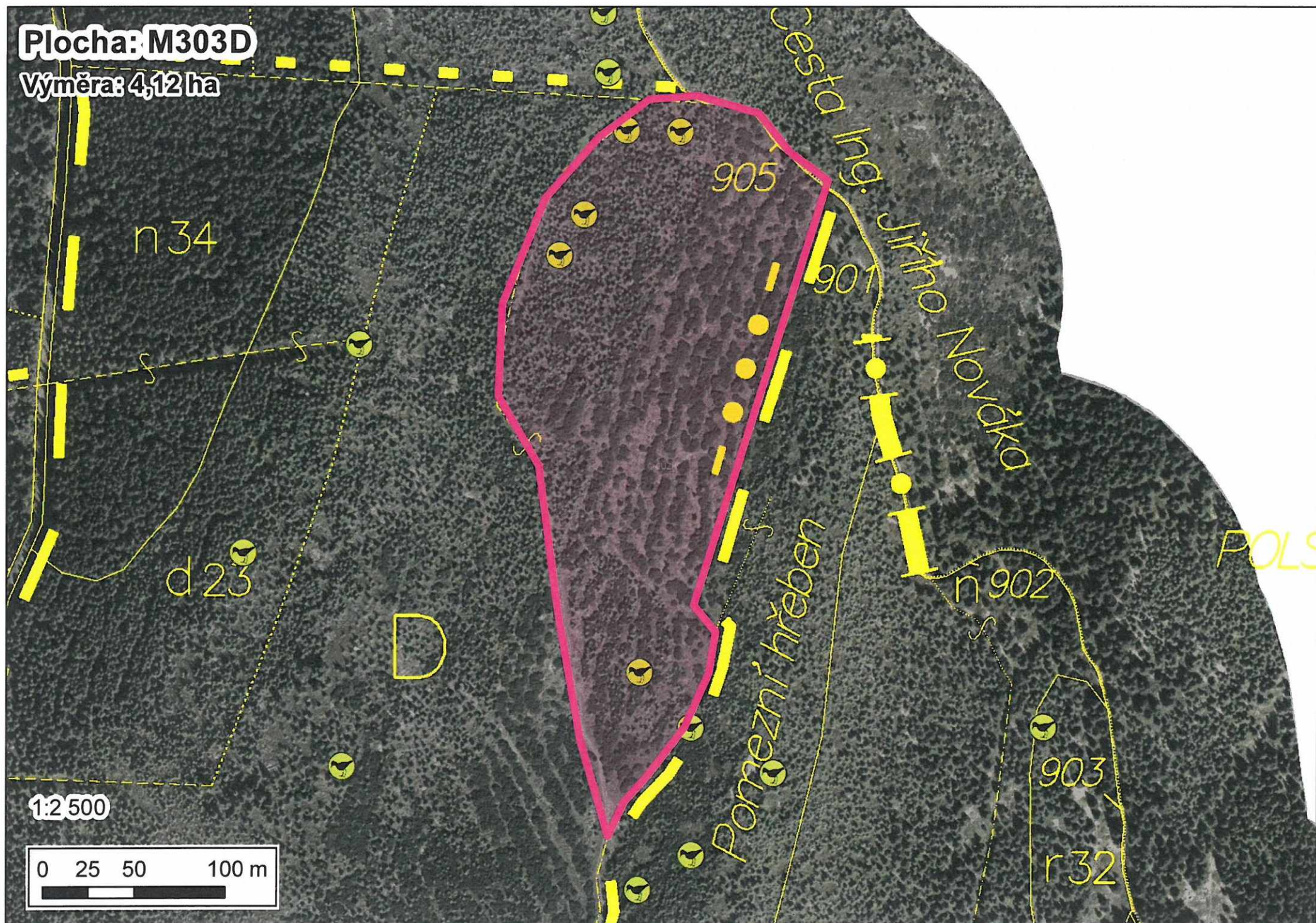
Plocha: M101B

Výměra: 2,87 ha

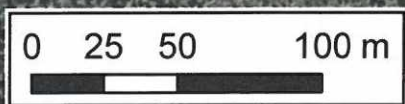


Plocha: M303D

Výměra: 4,12 ha



1:2500



Plocha: V502B

Výměra: 3,38 ha

